

# ALIBABA GEORGIA

## MY COMPANIES

TÜRKIYE : MERSIN SOLAR PANEL LTD STI  
GEORGIA BATUMI : BES + FOREVER COMPANY  
CHINA : Quanzhou FOREVER COMPANY

## GEORGIA WORLD TRADE

alibaba georgia  
amazon georgia  
AliExpress georgia  
Taobao georgia  
TMall georgia  
banggood georgia  
dx georgia  
Gearbest georgia  
Focalprice georgia



An advertisement for "ALIBABA GEORGIA &amp; WORLD". It features a golden eagle with its wings spread, perched on a globe. The text "BUY EASY SELL" and "BES" is prominently displayed. Below the globe is a WhatsApp icon and the phone number "+995 557 60 30 30". In the top right corner, there is a logo for "Alibaba.com" and the name "BATUMI FOREVER COMPANY HALIT MICHAEL KOSE".

## CONTRACTED FACTORIES : 48

TECHNOLOGY : 21  
AUTOMOTIVE : 4  
BUILDING : 3  
HOUSE : 8  
FOOD : 2  
ENERGY : 1  
TEXTILE : 9



An advertisement for "GEORGIA WORLD TRADE". It features a map of Georgia with a red cross on a white background. The text "GEORGIA WORLD TRADE" is prominently displayed. Below the map are logos for "Alibaba Group", "amazon", and "Forever Company". In the bottom right corner, there is a list of social media handles and the phone number "+995557603030". The name "HALIT MICHAEL KOSE" is also present.

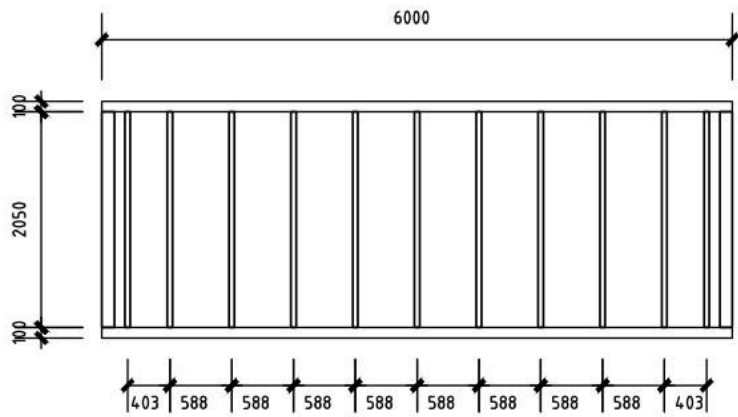




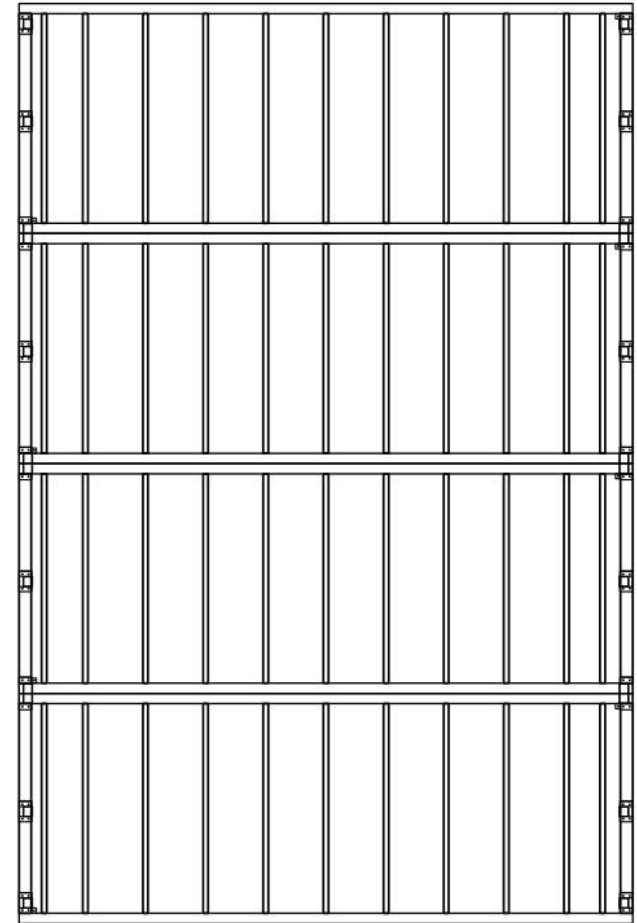


三角屋安装说明

Triangle Shape House Installation Instructions



四个模块拼接成地面框架  
 Splice four modules to form one floor frame



地面框架  
 Floor frame

# Floor Frame Module Assembly

Floor frame module

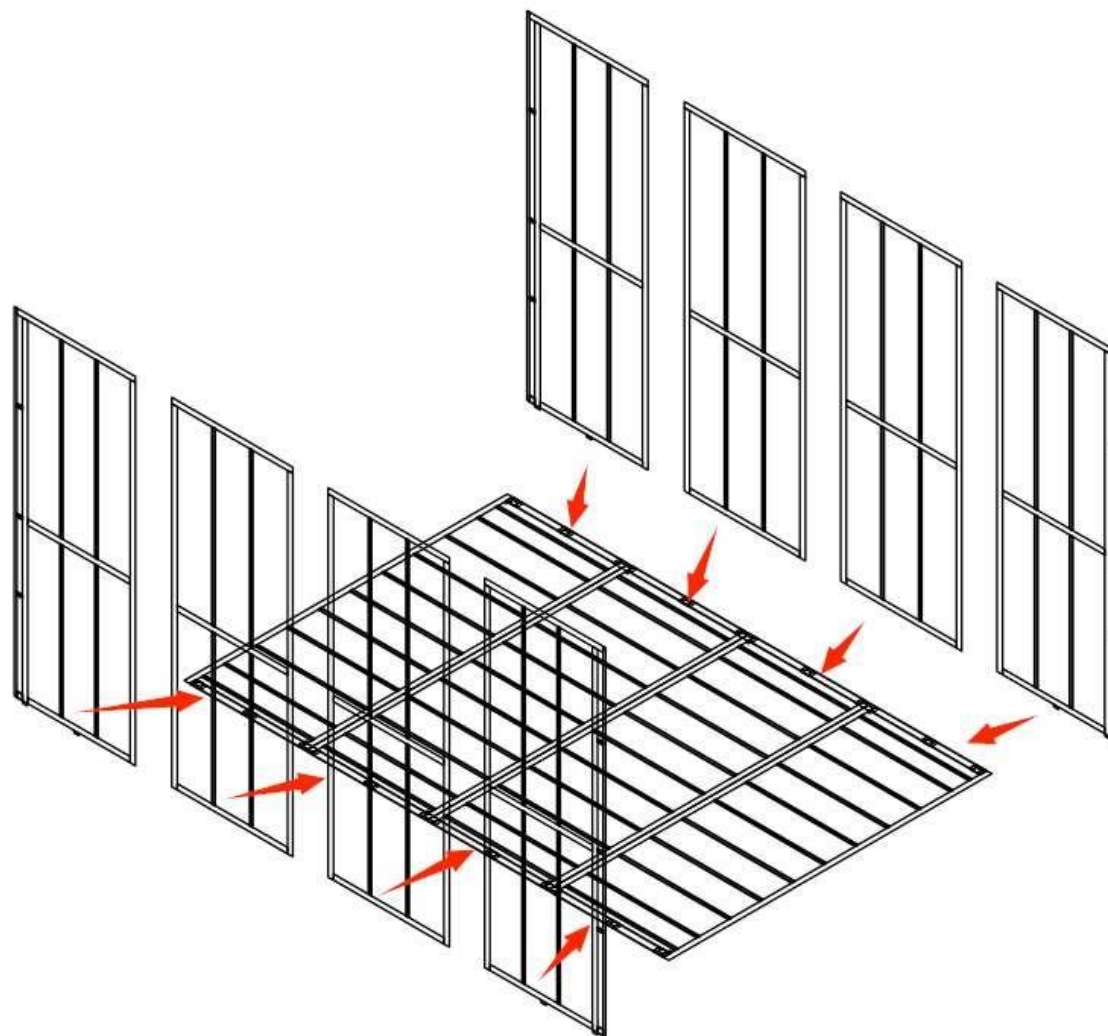
## 屋面框架模块组装

## Floor Frame Module

## Assembly

八个屋面框架模块分别与地面框架采用连接件和螺栓连接，如右图所示

Use connectors and bolts to connect eight roof frame modules with the floor frame, as shown at right.



## 屋面框架模块组装



Floor Frame

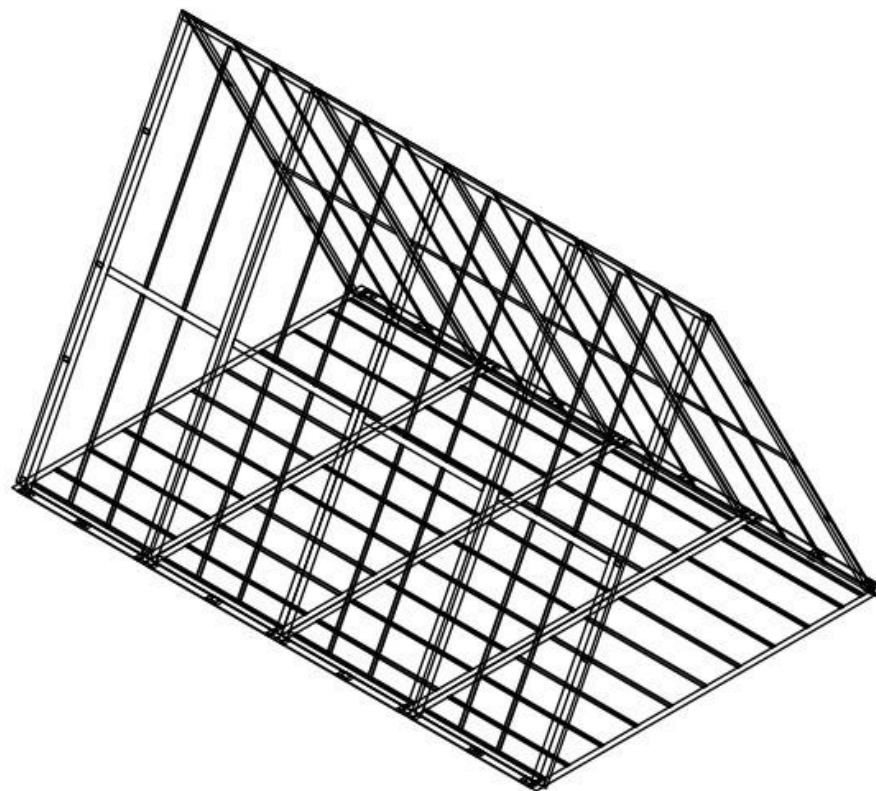
Module

Assembly

屋面框架顶部采用连接件互相连接，形成框架整体，如右图，框架连接完成后的成果类似照片所示

Connect the roof frame top with

connectors to form a whole frame, the finished effect as shown at right.

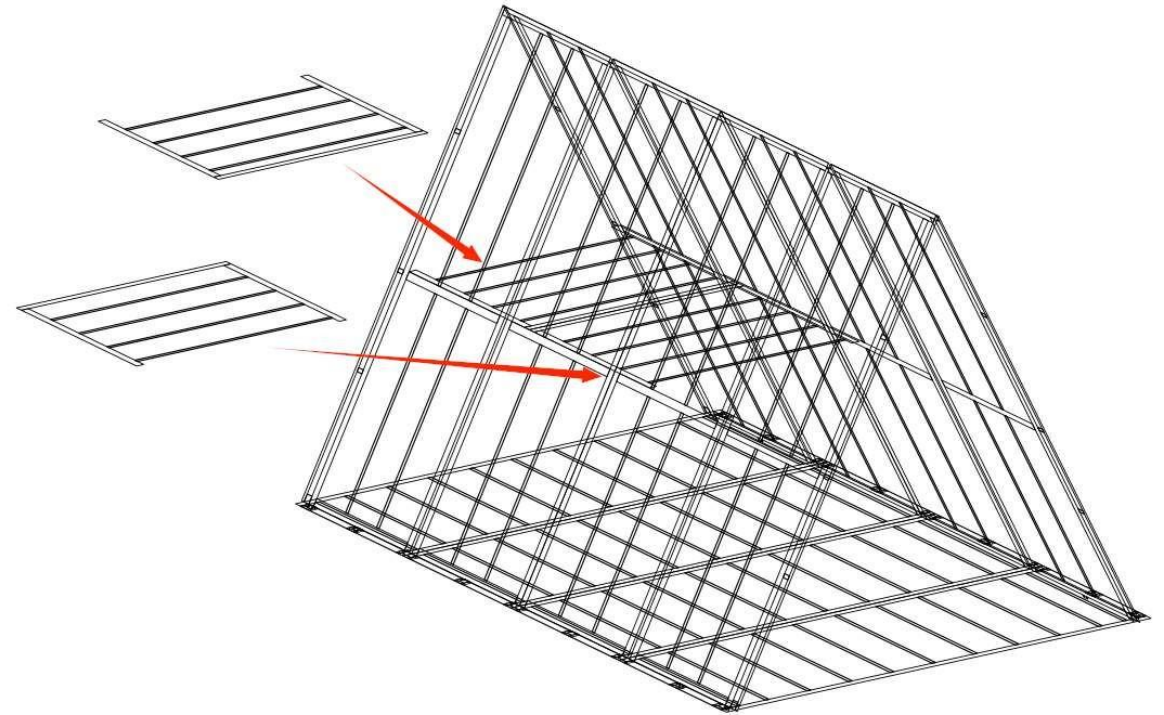


## 二层地面框架模块组装

## Second Floor Frame Module Assembly

两个二层地面框架与屋面框架采用连接件连接，如右图所示

Connect the two second floor frames and roof frame with connectors, as shown at right.



## 隔墙框架模块组装

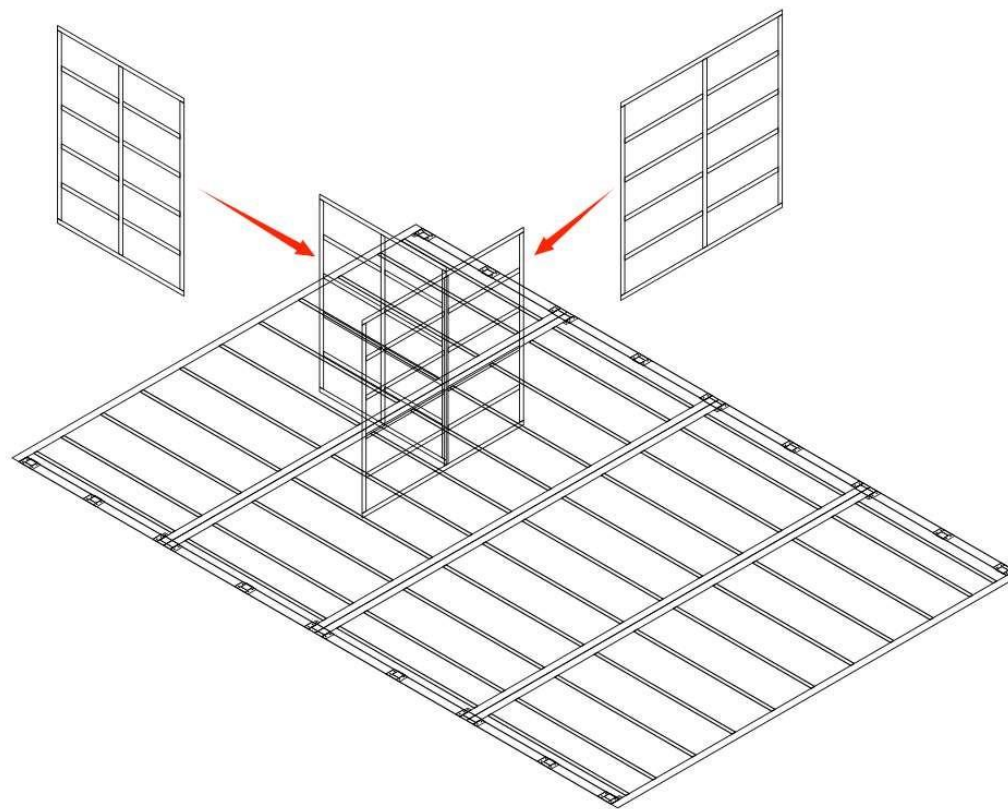
## Partition Frame Module Assembly



两个隔墙框架与地面框架、二层地面框架采用螺栓连接，如右图所示（为方便示意，此图隐藏了墙面框架、二层地面框架）

Use bolts to connect the two partition frames with the floor frame and the floor frame on the second floor frame, as shown at right(the wall frame and the second floor frame are hidden for convenience).

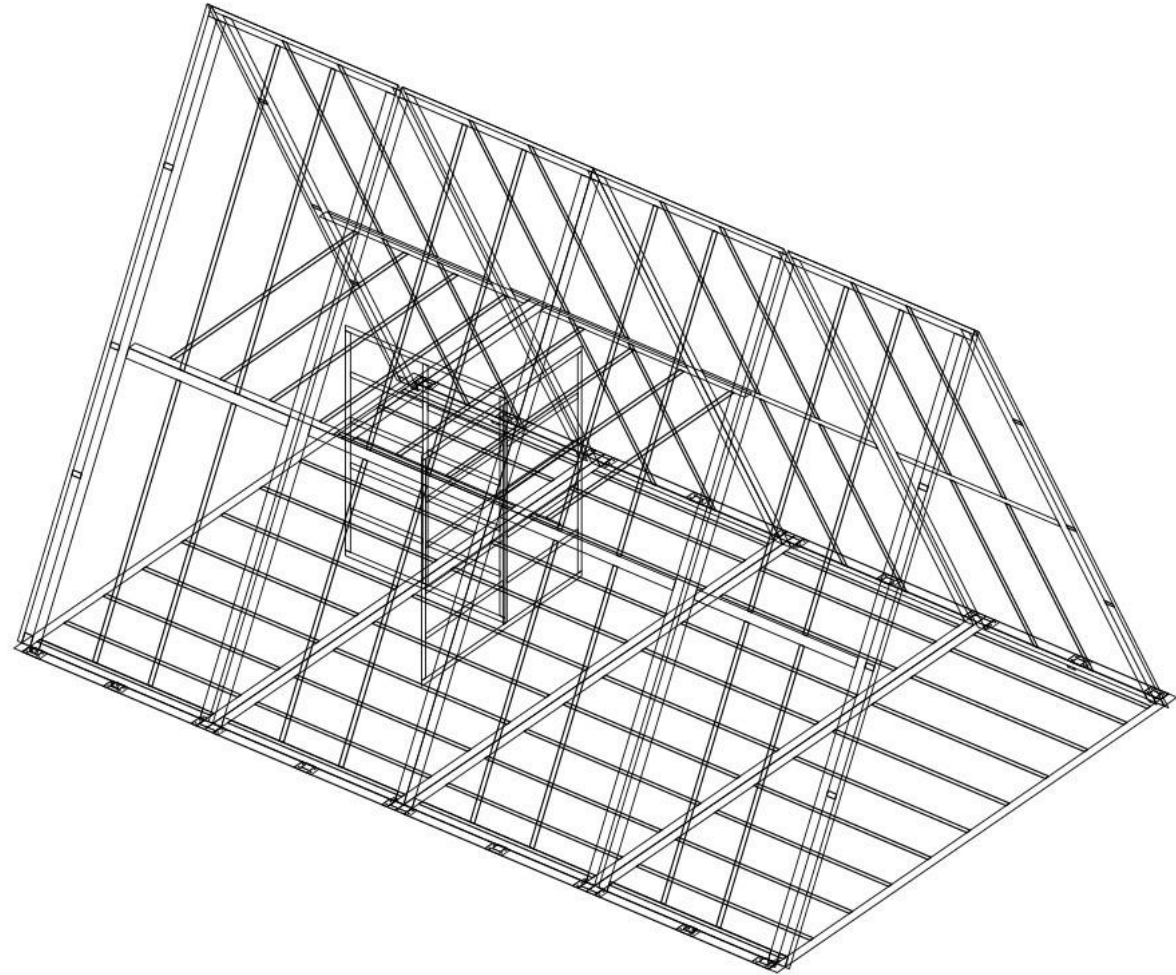
**房体框架组装完成**



## Frame Assembly Complete

至此，房体框架整体组装完成，如右图所示，下图照片为参考

So far, the overall assembly of the frame has been



completed, as shown at right and the photo below are for reference.



## 二、屋面、地面 Roof and Floor

## 水泥纤维板铺设

## Cement Board Laying

首层地面，首先预设给排水管道，铺设地面防潮垫及保温棉，最后铺设水泥纤维板，完成成果如照片所示，二层地面只铺设水泥纤维板。

For the first floor, preset the water supply and drainage pipes, and then the floor Moisture-proof pad and insulation cotton, lay the cement board at last. Only the cement fiber board shall be laid on the second floor. The finished effect as shown in the photo below.



# 基板安装





## Base Plate Installation

屋面框架内侧、二层框架下侧、隔墙框架两侧安装 12mm 厚多层板基板，安装基板的同时预留电线，如右侧照片所示

Install the 12mm thick multilayer base plate on the inner side of the roof frame, the lower side of the second floor frame and both sides of the partition frame, and reserve the wires while installing, as shown at right.

## 竹木纤维板安装



## Bamboo and Wood Fiber Board

### Installation

屋面框架内侧、二层框架下侧、隔墙框架两侧安装 9mm 厚竹木纤维板，固定于基层板上，安装完成后，按照预留灯具、开关点位，安装灯具、开关，如右侧照片所示

Install the 9mm thick bamboo and wood fiber board on the inner side of the roof frame, the lower side of the second floor frame, and both sides of the partition frame, and fix on the base plate. After installation, install lamps and switches according to the reserved positions, as shown at right.

### 金属雕花板安装

## Metal Carved Board Installation



屋面框架外侧安装 75mm 厚金属雕花板固定于框架上，如右侧照片所示

Install the 75mm thick metal carved board outside the roof frame, and fixed on the frame, as shown at right.

玻璃幕墙安装

Glass Screen Wall

Installation



在前后两侧，安装整体铝合金玻璃幕墙，如右侧照片所示

Install the overall aluminum alloy glass screen wall of the front and rear sides, as shown at right.

## 地板安装

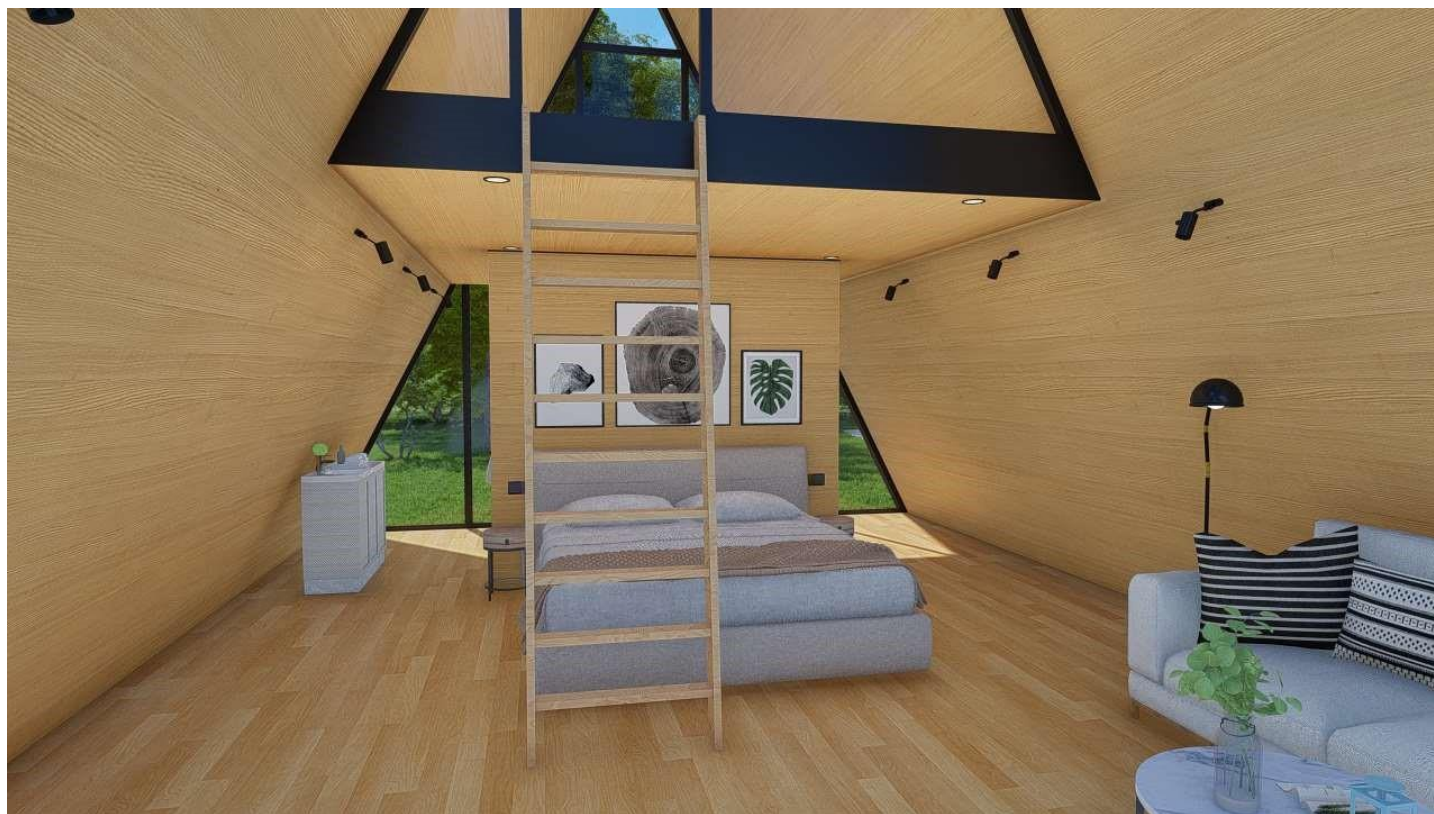
## Floor Installation





在首层地面、二层地面  
水泥纤维板上，铺设  
SPC 石塑锁扣地板，如  
右侧效果图图片所示

Lay the SPC stone  
plastic lock floor on  
the cement board of  
the first and the  
second floor, as shown  
at right.





# 三、散件安装

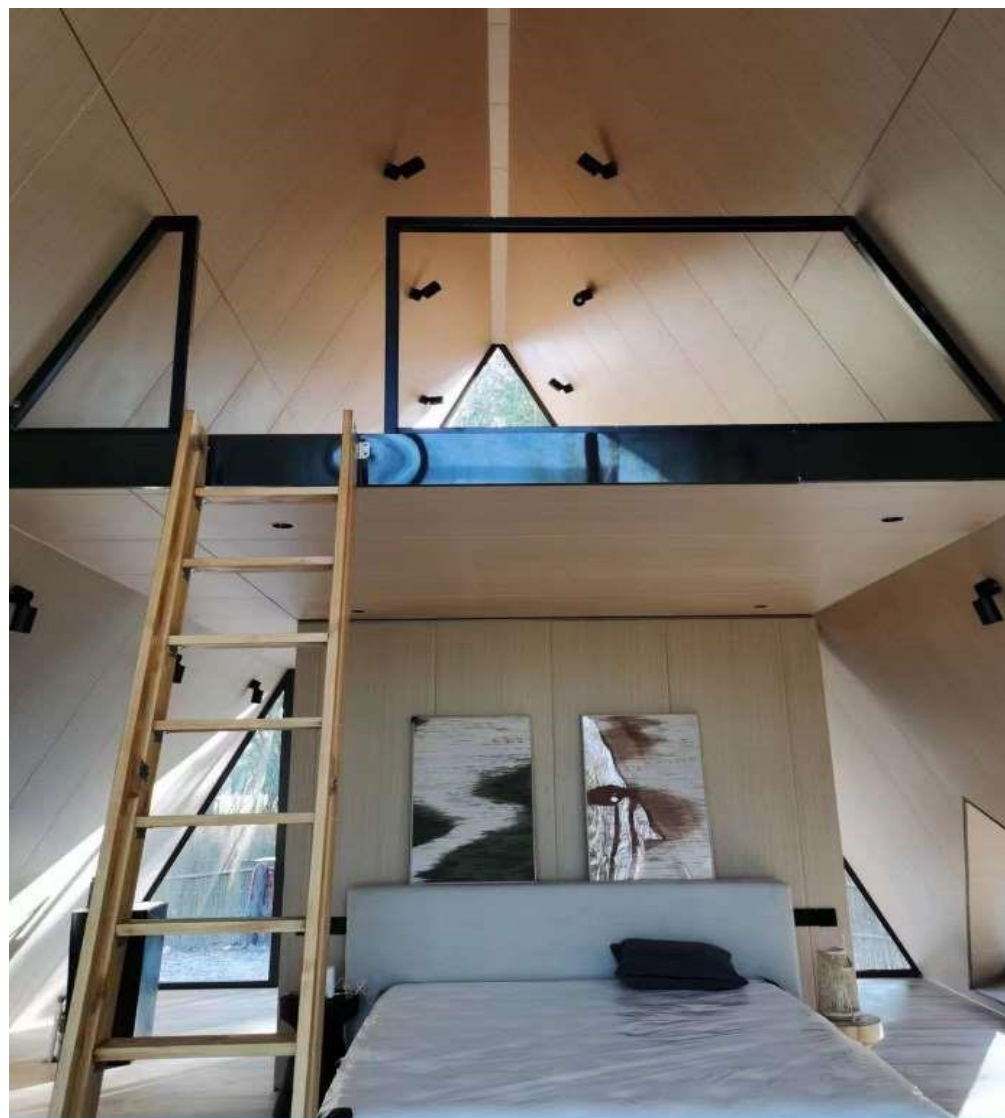
## Accessories Installation

## 楼梯、栏杆安装

## Stairs and Railings Installation

铝合金楼梯、玻璃栏杆安装，如右图示意，  
照片仅为示意

Install aluminum alloy stairs and glass railings. The picture at right to supply the reference only.



楼梯、栏杆安装

Stairs and Railings

Installation

卫生间玻璃隔断、马桶、花洒、五金小件、洗漱柜等安装，各部件如照片所示，照片仅为示意



Install the bathroom glass partition, toilet, shower, hardware accessories, toilet cabinet, etc. The components are shown at right. The picture at right to supply the reference only.







安装完成

Installation Complete

---